

2012

Penn Township

COMPREHENSIVE PLAN



Appendix A

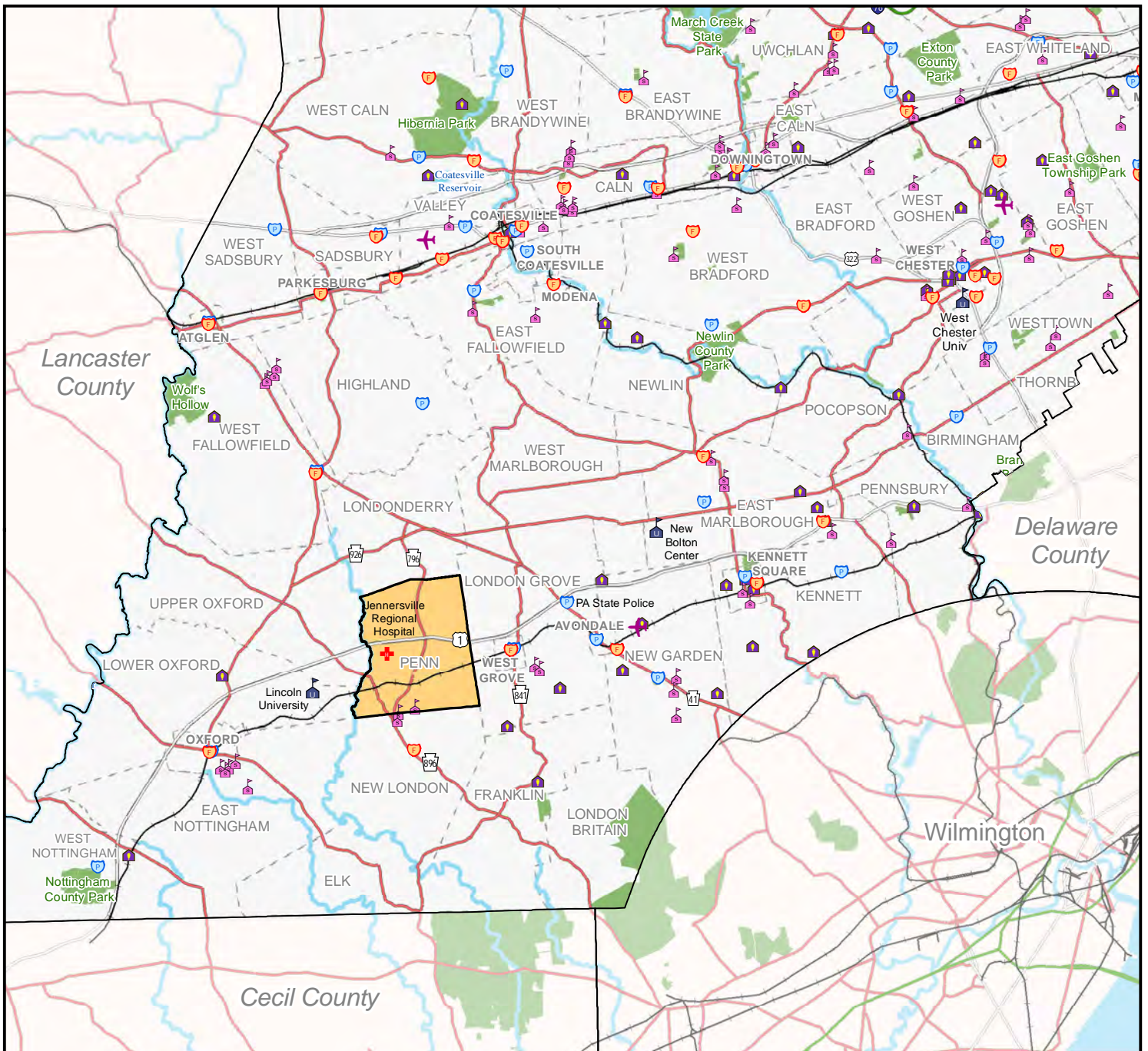
PAGE INTENTIONALLY LEFT BLANK

APPENDIX A

MAPPING

- 1-1 Regional Setting
- 4-1 Water Resources
- 4-2 Geology and Slopes
- 4-3 Soils
- 4-4 Biotic Resources
- 5-1 Historic Resources
- 5-2 Scenic Resources
- 6-1 Transportation Systems
- 6-2 Bridge Conditions
- 6-3 Transportation Needs
- 7-1 Community Facilities and Services
- 8-1 Recreation and Open Space Inventory
- 8-2 Undeveloped Lands and Agricultural Security Areas
- 8-3 Potential Recreation Greenway and Open Space Clusters
- 10-1 Existing Land Use
- 10-2 Developable Lands
- 10-3 Future Land Use Plan

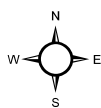
PAGE INTENTIONALLY LEFT BLANK



Penn Township Comprehensive Plan

Map 1-1: Regional Setting

0 1.5 3 6 Miles



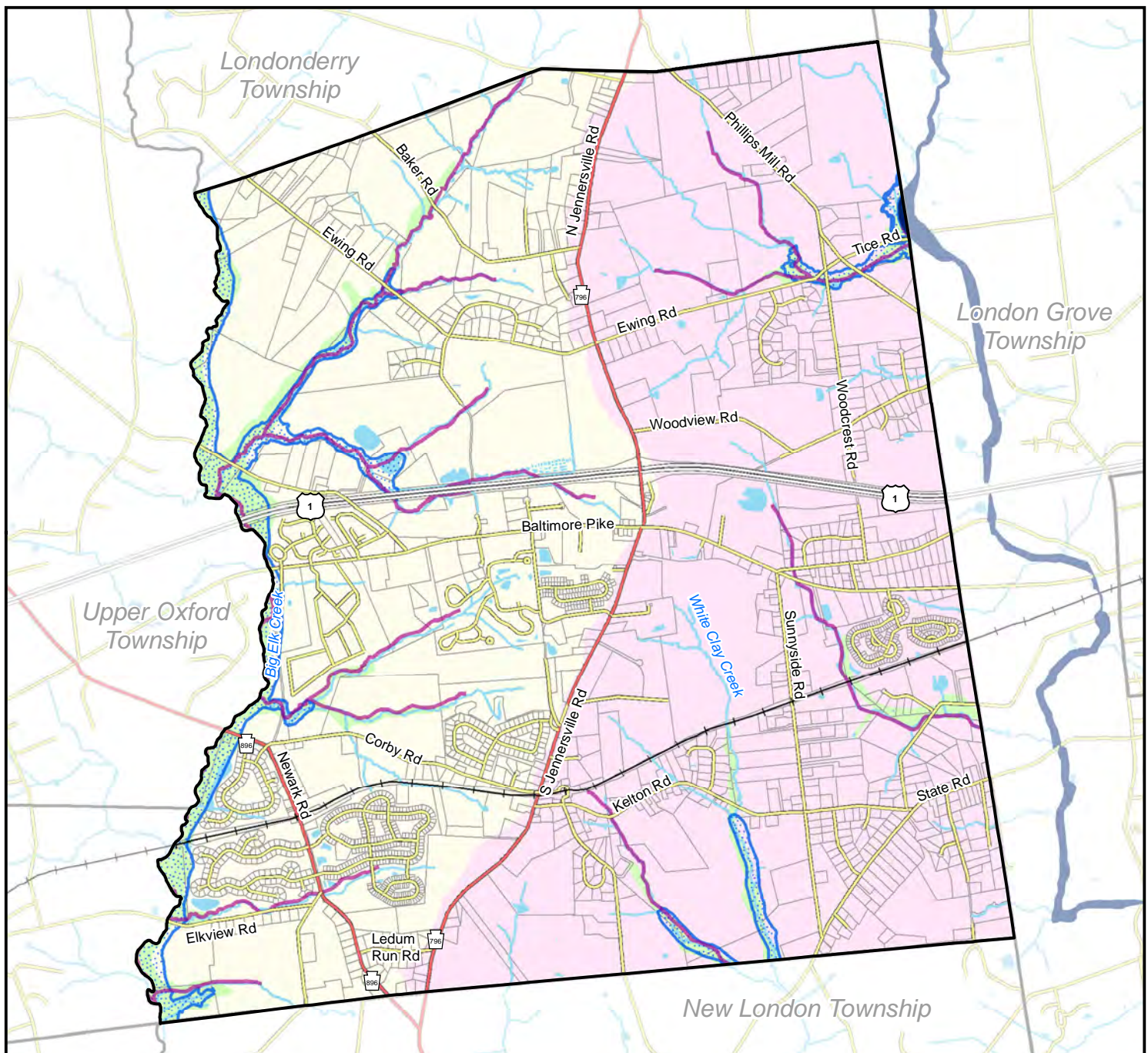
This map was digitally compiled for internal maintenance and developmental use by the County of Chester, Pennsylvania to provide an index to parcels and for other reference purposes. Parcel lines do not represent actual field surveys of premises. County of Chester, Pennsylvania makes no claims as to the completeness, accuracy or content of any data contained herein, and makes no representation of any kind, including, but not limited to, the warranties of merchantability or fitness for a particular use, nor are any such warranties to be implied or inferred, with respect to the information or data furnished herein. No part of this document may be reproduced, stored in a retrieval system or transmitted in any form or by any means, electronic, mechanical, photocopying, recording, or otherwise, except as expressly permitted by the County of Chester.

Chester County Planning Commission, September 2012



Map Features

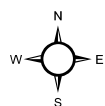
- | | |
|---------------------------|---------------------------|
| Airports | Railroad |
| Colleges and Universities | State Road |
| Fire Stations | Interstate |
| Hospitals | US Highway |
| Police Stations | Lakes, Rivers and Streams |
| Public Schools | Parks |
| Recreation | Municipal Boundaries |



Penn Township Comprehensive Plan

Map 4-1: Water Resources

0 0.25 0.5 1 Miles



This map was digitally compiled for internal maintenance and developmental use by the County of Chester, Pennsylvania to provide an index to parcels and for other reference purposes. Parcel lines do not represent actual field surveys of premises. County of Chester, Pennsylvania makes no claims as to the completeness, accuracy or content of any data contained hereon, and makes no representation of any kind, including, but not limited to, the warranties of merchantability or fitness for a particular use, nor are any such warranties to be implied or inferred, with respect to the information or data furnished herein. No part of this document may be reproduced, stored in a retrieval system or transmitted in any form or by any means, electronic, mechanical, photocopying, recording, or otherwise, except as expressly permitted by the County of Chester.

Chester County Planning Commission, September 2012



Map Features

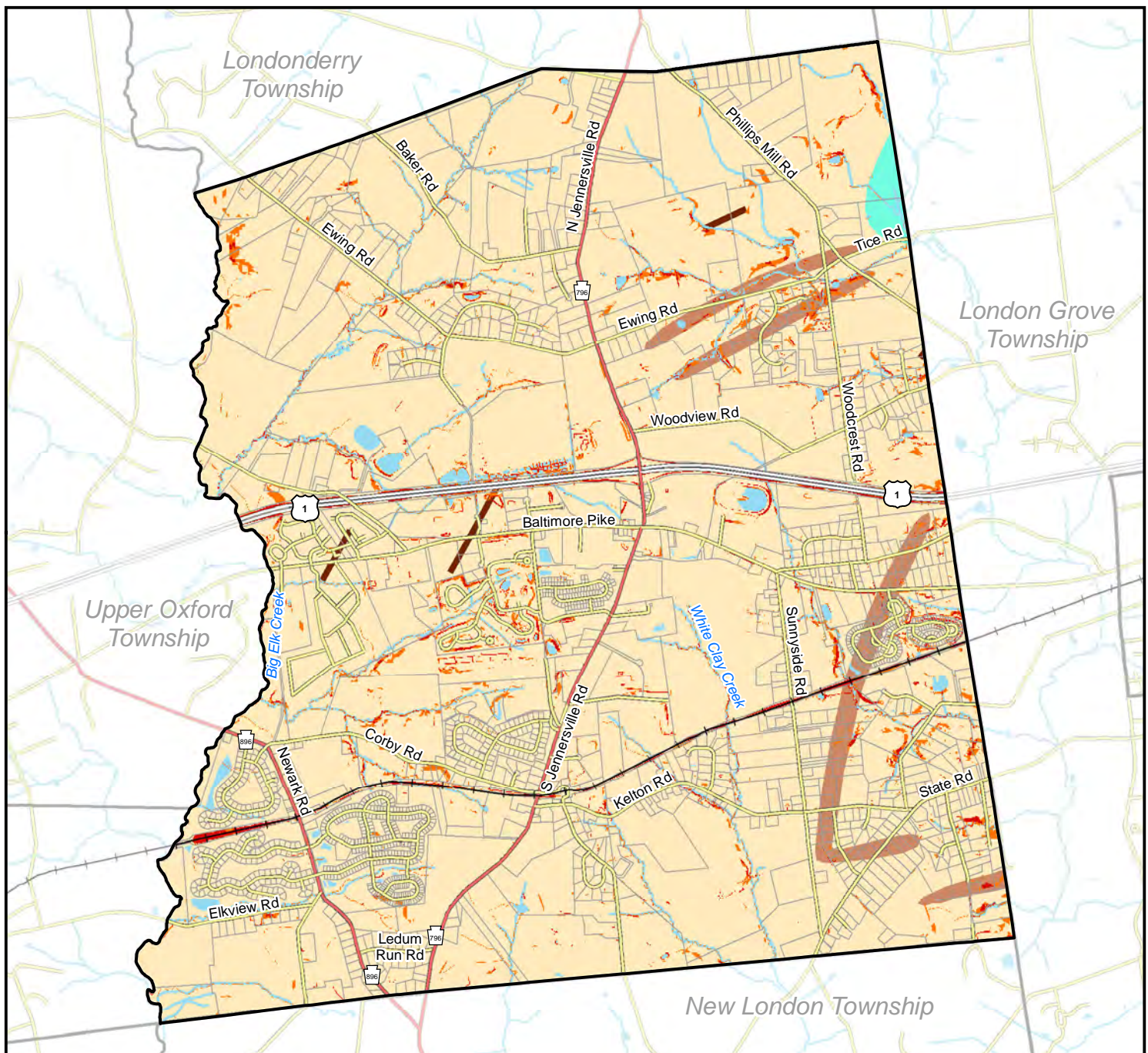
Watersheds:

- Big Elk Creek (High Quality)
- White Clay Creek

Other Features:

- 100 Year Floodplain
- Floodway
- Alluvial Soil
- PADEP Streams Non-Attaining

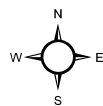
- Municipal Boundaries
- Parcels
- Railroad
- Local Road
- State Road
- US Highway
- Lakes, Rivers and Streams



Penn Township Comprehensive Plan

Map 4-2: Geology and Slopes

0 0.25 0.5 1 Miles



This map was digitally compiled for internal maintenance and developmental use by the County of Chester, Pennsylvania to provide an index to parcels and for other reference purposes. Parcel lines do not represent actual field surveys of premises. County of Chester, Pennsylvania makes no claims as to the completeness, accuracy or content of any data contained hereon, and makes no representation of any kind, including, but not limited to, the warranties of merchantability or fitness for a particular use, nor are any such warranties to be implied or inferred, with respect to the information or data furnished herein. No part of this document may be reproduced, stored in a retrieval system or transmitted in any form or by any means, electronic, mechanical, photocopying, recording, or otherwise, except as expressly permitted by the County of Chester.

Chester County Planning Commission, September 2012



Map Features

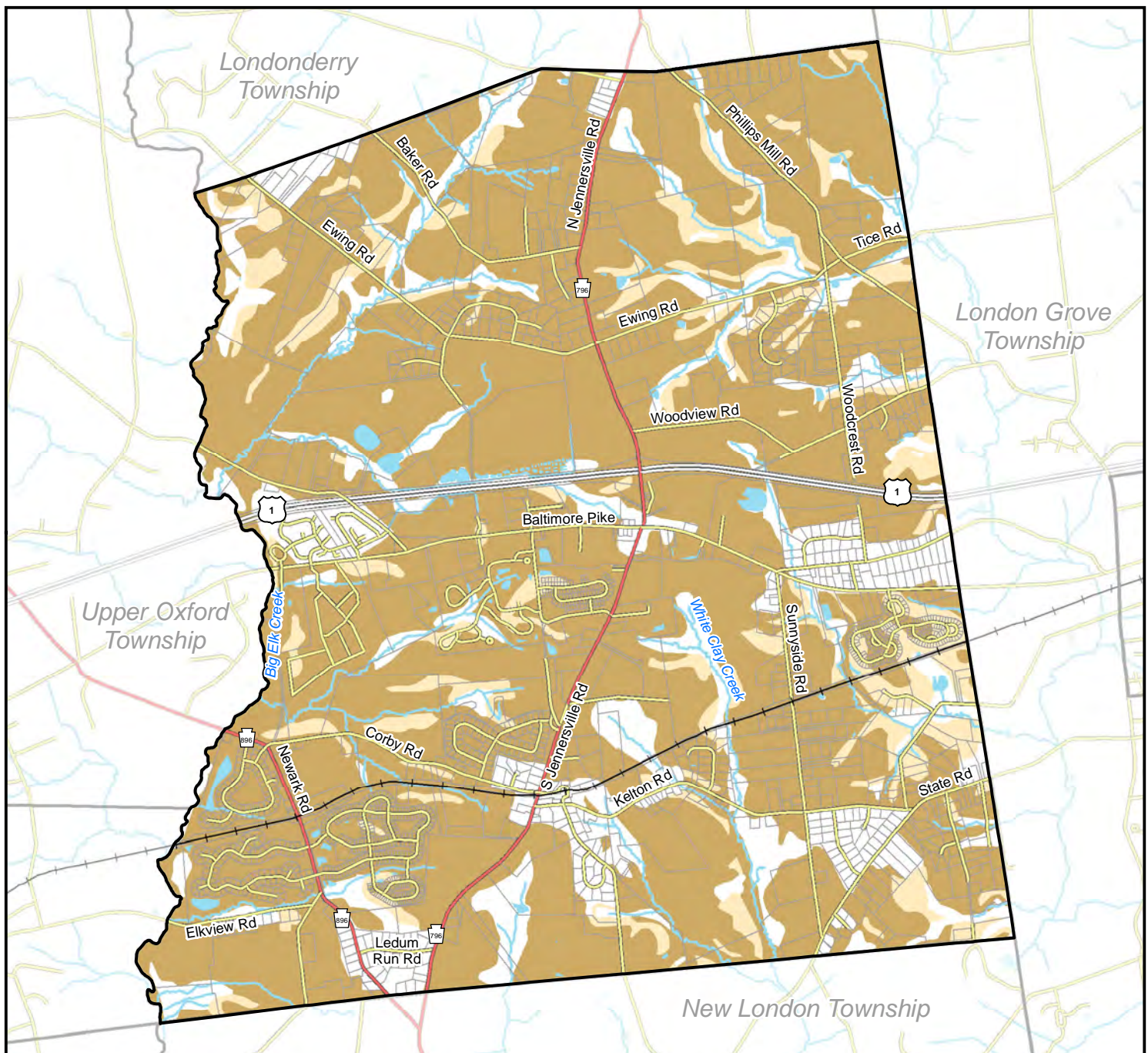
Geology:

- Cockeysville Marble
- Wissahickon Formation
- Mafic Gneiss
- Dike Lines

Slope Values:

- Moderate Slope (15 - 25%)
- Steep Slope (> 25%)

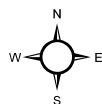
- Municipal Boundaries
- Parcels
- Railroad
- Local Road
- State Road
- US Highway
- Lakes, Rivers and Streams



Penn Township Comprehensive Plan

Map 4-3: Agricultural Soils

0 0.25 0.5 1 Miles



This map was digitally compiled for internal maintenance and developmental use by the County of Chester, Pennsylvania to provide an index to parcels and for other reference purposes. Parcel lines do not represent actual field surveys of premises. County of Chester, Pennsylvania makes no claims as to the completeness, accuracy or content of any data contained hereon, and makes no representation of any kind, including, but not limited to, the warranties of merchantability or fitness for a particular use, nor are any such warranties to be implied or inferred, with respect to the information or data furnished herein. No part of this document may be reproduced, stored in a retrieval system or transmitted in any form or by any means, electronic, mechanical, photocopying, recording, or otherwise, except as expressly permitted by the County of Chester.

Chester County Planning Commission, September 2012



Map Features

Agricultural Soils:

- Prime Farmland
- Farmland of Statewide Importance

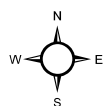
- Municipal Boundaries
- Parcels
- Railroad
- Local Road
- State Road
- US Highway
- Lakes, Rivers and Streams



Penn Township Comprehensive Plan

Map 4-4: Biotic Resources

0 0.25 0.5 1 Miles



This map was digitally compiled for internal maintenance and developmental use by the County of Chester, Pennsylvania to provide an index to parcels and for other reference purposes. Parcel lines do not represent actual field surveys of premises. County of Chester, Pennsylvania makes no claims as to the completeness, accuracy or content of any data contained hereon, and makes no representation of any kind, including, but not limited to, the warranties of merchantability or fitness for a particular use, nor are any such warranties to be implied or inferred, with respect to the information or data furnished herein. No part of this document may be reproduced, stored in a retrieval system or transmitted in any form or by any means, electronic, mechanical, photocopying, recording, or otherwise, except as expressly permitted by the County of Chester.

Chester County Planning Commission, September 2012

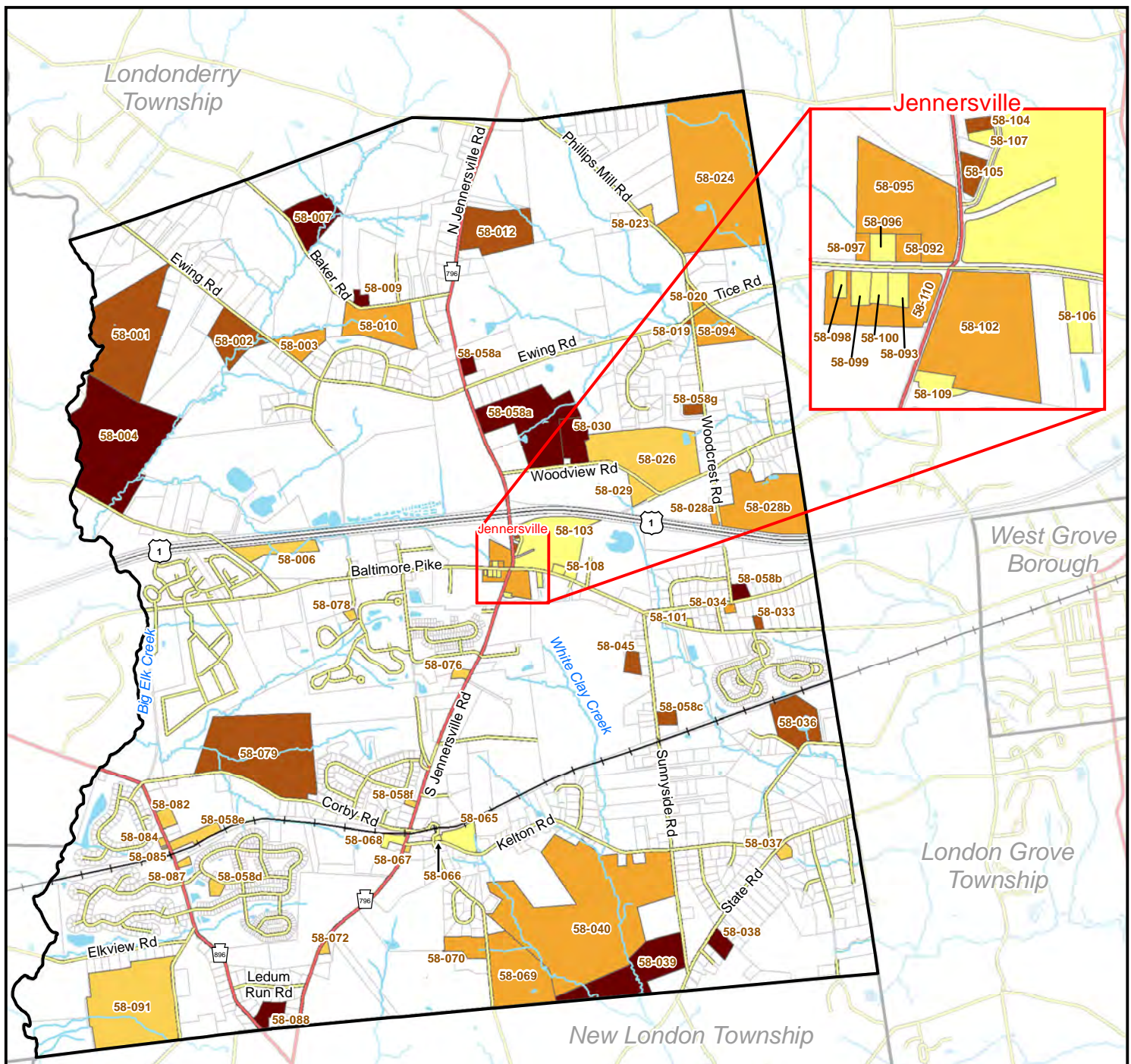


Map Features

Biotic Resources:

- Wetlands
- Woodlands
- Hydric Soils
- PNDI Sites

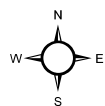
- Municipal Boundaries
- Parcels
- Railroad
- Local Road
- State Road
- US Highway
- Lakes, Rivers and Streams



Penn Township Comprehensive Plan

Map 5-1: Historic Resources

0 0.25 0.5 1 Miles



This map was digitally compiled for internal maintenance and developmental use by the County of Chester, Pennsylvania to provide an index to parcels and for other reference purposes. Parcel lines do not represent actual field surveys of premises. County of Chester, Pennsylvania makes no claims as to the completeness, accuracy or content of any data contained hereon, and makes no representation of any kind, including, but not limited to, the warranties of merchantability or fitness for a particular use, nor are any such warranties to be implied or inferred, with respect to the information or data furnished herein. No part of this document may be reproduced, stored in a retrieval system or transmitted in any form or by any means, electronic, mechanical, photocopying, recording, or otherwise, except as expressly permitted by the County of Chester.

Chester County Planning Commission, September 2012



Map Features

Locally Significant Historic Resources:

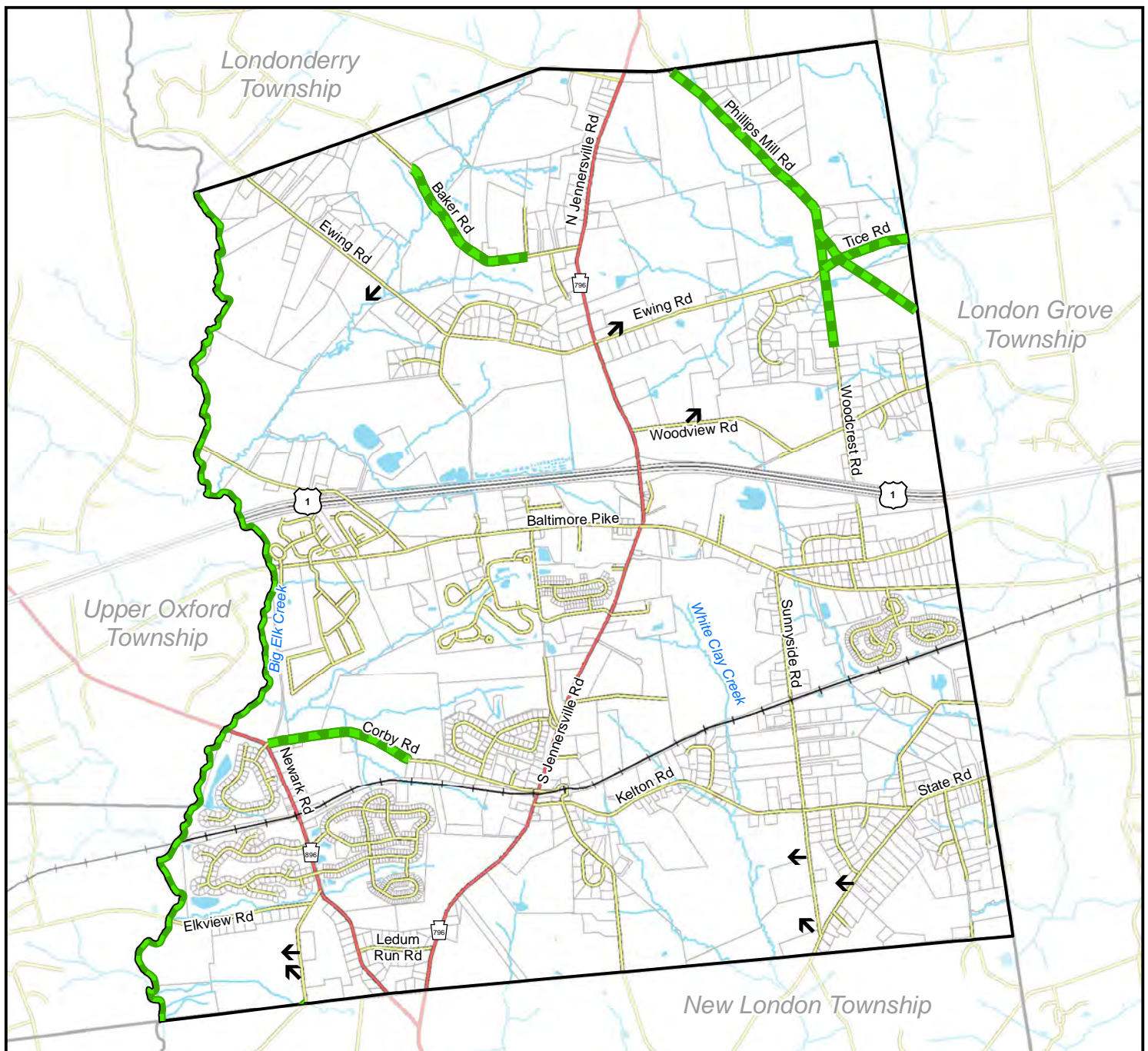
(Circa Date)
1700 - 1750
1751 - 1800
1801 - 1850
1851 - 1900
1901 - 1950

Historic ID - 58-024

	Municipal Boundaries
	Parcels
	Railroad
	Local Road
	State Road
	US Highway
	Lakes, Rivers and Streams

Locally Significant Historic Resources			
Historic ID	Address	Circa	Parcel ID
58-037	697 STATE RD	1873	58-4-132.1
58-098	825 W BALTIMORE PK	1910	58-4-19
58-103	670 W BALTIMORE PK	1933	58-4-29
58-004	650 PUSEY MILL RD	1730	58-3-1
58-096	812 W BALTIMORE PK	1930	58-4-3
58-084	2909 NEWARK RD	1860	58-3-29
58-110	102 S JENNERSVILLE RD	1850	58-4-24
58-009	266 BAKER RD	1711	58-1-8.3
58-023	164 PHILLIPS MILL RD	1863	58-2-19.1C
58-058d	310 MCNEIL LA	1868	58-3-45
58-105	206 N JENNERSVILLE RD	1800	58-4-5
58-066	298 KELTON RD	1905	58-4-85
58-001	731 EWING RD	1800	58-1-12
58-058a	410 N JENNERSVILLE RD	1711	58-2-9.1
58-104	220 N JENNERSVILLE RD	1800	58-4-9
58-101	486 W BALTIMORE PK	1948	58-4-40.1
58-058e	2890 NEWARK RD	1880	58-3-38
58-006	604 PUSEY MILL RD	1880	58-3-4.2
58-002	723 EWING RD	1800	58-1-13.1
58-102	699 W BALTIMORE PK	1820	58-4-56
58-108	650 W BALTIMORE PK	1933	58-4-30
58-106	647 W BALTIMORE PK	1918	58-4-58
58-076	138 S JENNERSVILLE RD UNIT A	1863	58-4-25.1
58-107	220 N JENNERSVILLE RD	1950	58-4-8
58-029	435 WOODVIEW RD	1883	58-4-11
58-028b	190 WOODCREST RD	1817	58-4-35.1
58-020	105 PHILLIPS MILL RD	1826	58-2-18
58-094	485 EWING RD	1826	58-2-26
58-095	804 W BALTIMORE PK	1828	58-4-1.1
58-079	148 CORBY RD	1800	58-3-20.1
58-045	128 SUNNYSIDE RD	1782	58-4-61.3
58-058g	345 WOODCREST RD	1800	58-2-23
58-039	348 SUNNYSIDE RD	1750	58-6-2
58-019	603 EWING RD	1800	58-2-25
58-058f	182 S JENNERSVILLE RD	1875	58-3-25-E

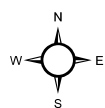
Locally Significant Historic Resources (continued)			
Historic ID	Address	Circa	Parcel ID
58-070	276 PENNOCKS BRIDGE RD	1750;1850	58-4-150
58-007	230 BAKER RD	1711	58-1-6
58-072	335 S JENNERSVILLE RD	1883	58-5-8-E
58-065	280 KELTON RD	1905	58-4-86
58-085	2901 NEWARK RD	1860	58-3-30
58-038	739 STATE RD	1750	58-6-4
58-091	148 HUTCHINSON RD	1870	58-5-2
58-024	132 PHILLIPS MILL RD	1840	58-2-20
58-058a	354 N JENNERSVILLE RD	1700	58-4-13
58-088	150 QUIMBY RD	1700	58-5-6.1
58-034	201 PASCHALL MILL RD	1848	58-4-47
58-082	2930 NEWARK RD	1881	58-3-37.2
58-069	283 PENNOCKS BRIDGE RD	1850	58-6-1
58-092	808 W BALTIMORE PK	1820	58-4-4
58-030	462 WOODVIEW RD	1741	58-4-14
58-058b	102 WOODCREST RD	1737	58-4-39.8
58-068	304 S JENNERSVILLE RD	1908	58-3-49
58-028a	205 WOODCREST RD	1817	58-4-32
58-099	820 W BALTIMORE PK	1910	58-4-20
58-067	200 PENNOCKS BRIDGE RD APT 3	1860	58-3-52
58-087	2884 NEWARK RD	1900	58-3-44
58-109	107 S JENNERSVILLE RD	1930	58-4-55
58-012	452 N JENNERSVILLE RD	1761	58-2-13
58-100	815 W BALTIMORE PK	1940	58-4-20.1
58-026	424 WOODVIEW RD	1890	58-4-15
58-036	328 VALLEY RD	1765	58-4-105.5
58-058c	159 SUNNYSIDE RD	1800	58-4-99.3
58-040	328 SUNNYSIDE RD	1840	58-4-128
58-078	272 LEWIS RD	1900	58-3-19.9A
58-097	816 W BALTIMORE PK	1820	58-4-2
58-093	809 W BALTIMORE PK	1948	58-4-24.1
58-003	721 EWING RD	1848	58-1-4.1
58-010	263 BAKER RD	1828	58-1-5
58-033	452 W BALTIMORE PK	1787	58-4-49.19



Penn Township Comprehensive Plan

Map 5-2: Scenic Resources

0 0.25 0.5 1 Miles



This map was digitally compiled for internal maintenance and developmental use by the County of Chester, Pennsylvania to provide an index to parcels and for other reference purposes. Parcel lines do not represent actual field surveys of premises. County of Chester, Pennsylvania makes no claims as to the completeness, accuracy or content of any data contained hereon, and makes no representation of any kind, including, but not limited to, the warranties of merchantability or fitness for a particular use, nor are any such warranties to be implied or inferred, with respect to the information or data furnished herein. No part of this document may be reproduced, stored in a retrieval system or transmitted in any form or by any means, electronic, mechanical, photocopying, recording, or otherwise, except as expressly permitted by the County of Chester.

Chester County Planning Commission, September 2012



Map Features

Scenic Resources:



Scenic Vista



Scenic Corridor



Municipal Boundaries



Parcels



Railroad



Local Road



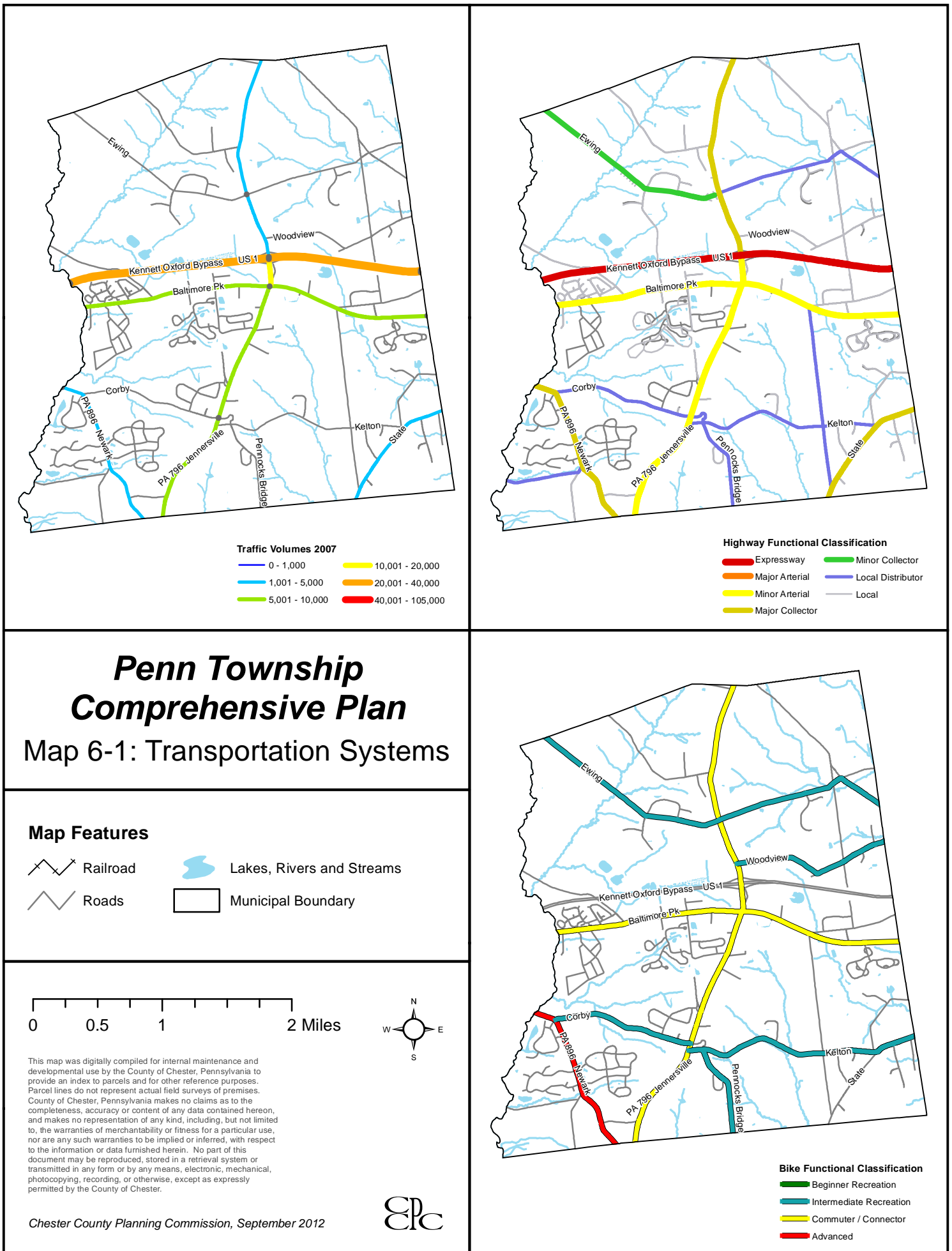
State Road

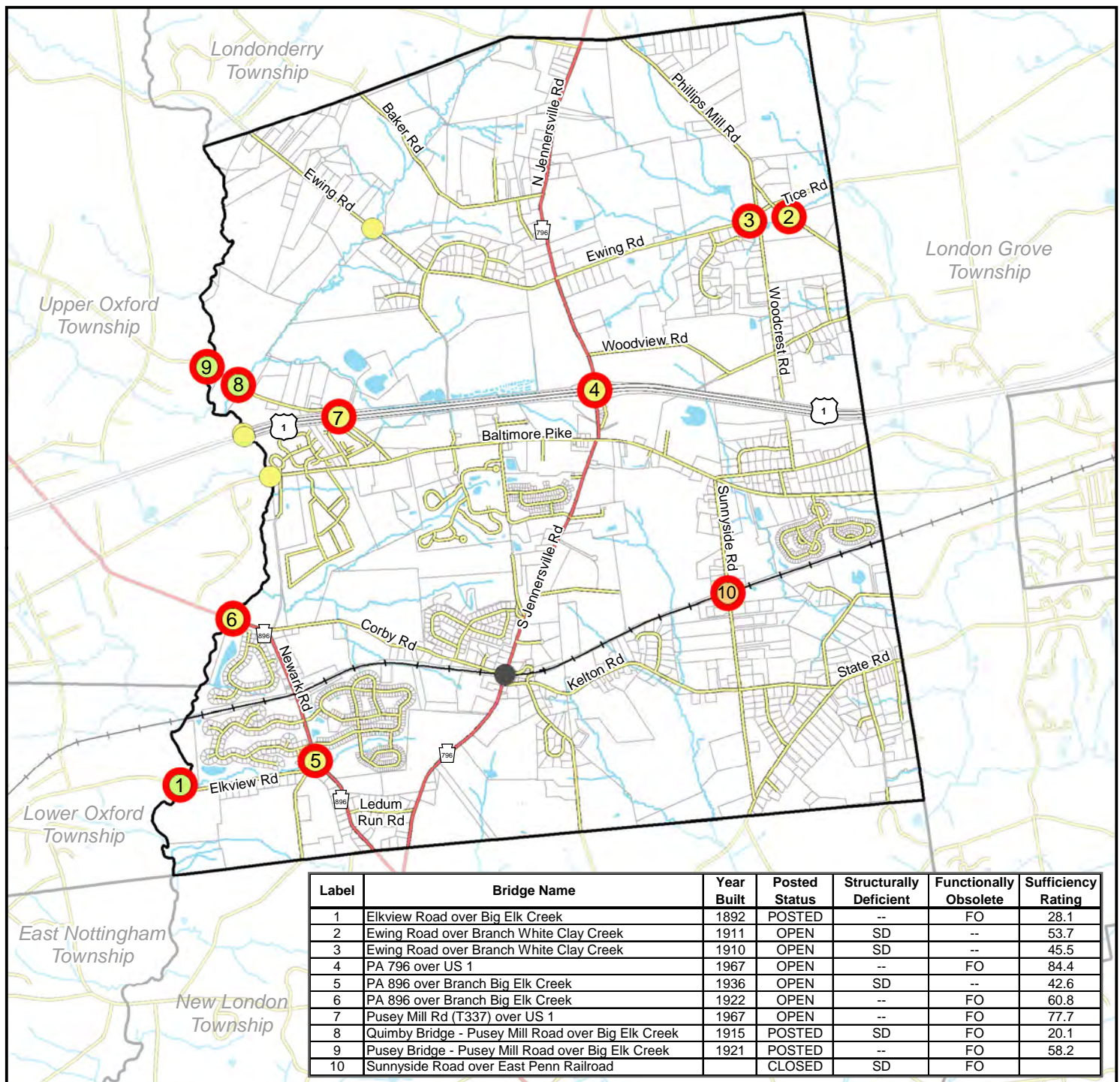


US Highway



Lakes, Rivers and Streams

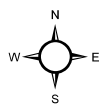




Penn Township Comprehensive Plan

Map 6-2: Bridge Conditions

0 0.25 0.5 1 Miles



This map was digitally compiled for internal maintenance and developmental use by the County of Chester, Pennsylvania to provide an index to parcels and for other reference purposes. Parcel lines do not represent actual field surveys of premises. County of Chester, Pennsylvania makes no claims as to the completeness, accuracy or content of any data contained hereon, and makes no representation of any kind, including, but not limited to, the warranties of merchantability or fitness for a particular use, nor are any such warranties to be implied or inferred, with respect to the information or data furnished herein. No part of this document may be reproduced, stored in a retrieval system or transmitted in any form or by any means, electronic, mechanical, photocopying, recording, or otherwise, except as expressly permitted by the County of Chester.

Chester County Planning Commission, September 2012



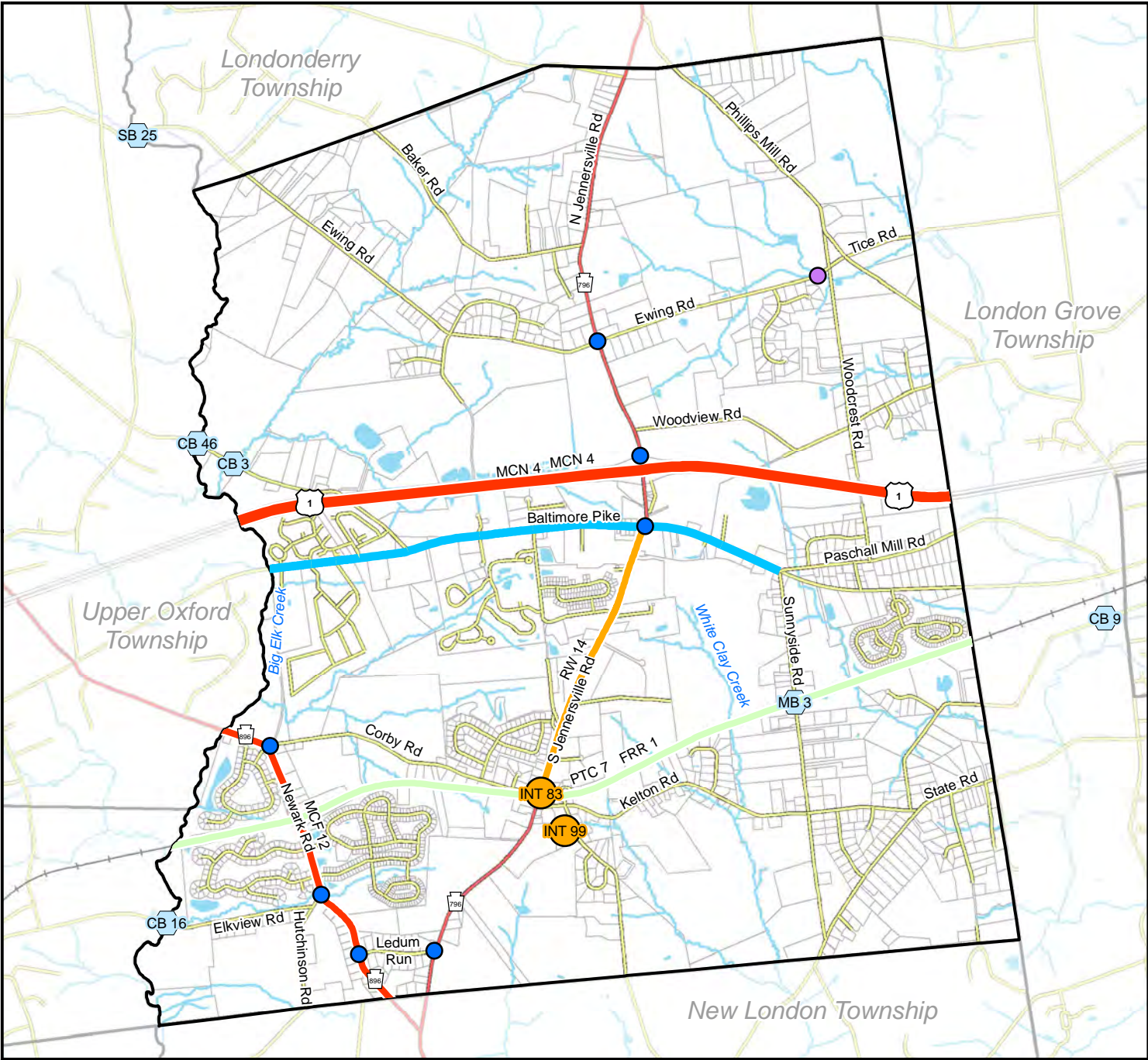
Map Features

● Structurally Deficient, Functionally Obsolete, or Sufficiency Rating <50

Bridge Owner:

- PennDOT
- Chester County
- Penn Township
- Railroad

- Municipal Boundaries
- Parcels
- Railroad
- Local Road
- State Road
- US Highway
- Lakes, Rivers and Streams



Penn Township Comprehensive Plan

Map 6-3: Transportation Needs

0 0.25 0.5 1 Miles

This map was digitally compiled for internal maintenance and developmental use by the County of Chester, Pennsylvania to provide an index to parcels and for other reference purposes. Parcel lines do not represent actual field surveys of premises. County of Chester, Pennsylvania makes no claims as to the completeness, accuracy or content of any data contained hereon, and makes no representation of any kind, including, but not limited to, the warranties of merchantability or fitness for a particular use, nor are any such warranties to be implied or inferred, with respect to the information or data furnished herein. No part of this document may be reproduced, stored in a retrieval system or transmitted in any form or by any means, electronic, mechanical, photocopying, recording, or otherwise, except as expressly permitted by the County of Chester.

Chester County Planning Commission, September 2012

Map Features

TII 2011 Projects:

- Bridges
- Major Corridors
- Public Transportation
- Roadways & Operations

Other Transportation Needs:

- Intersection Improvements
- Culvert Replacement
- Traffic Calming / Safety Improvements

Municipal Boundaries

Parcels

Railroad

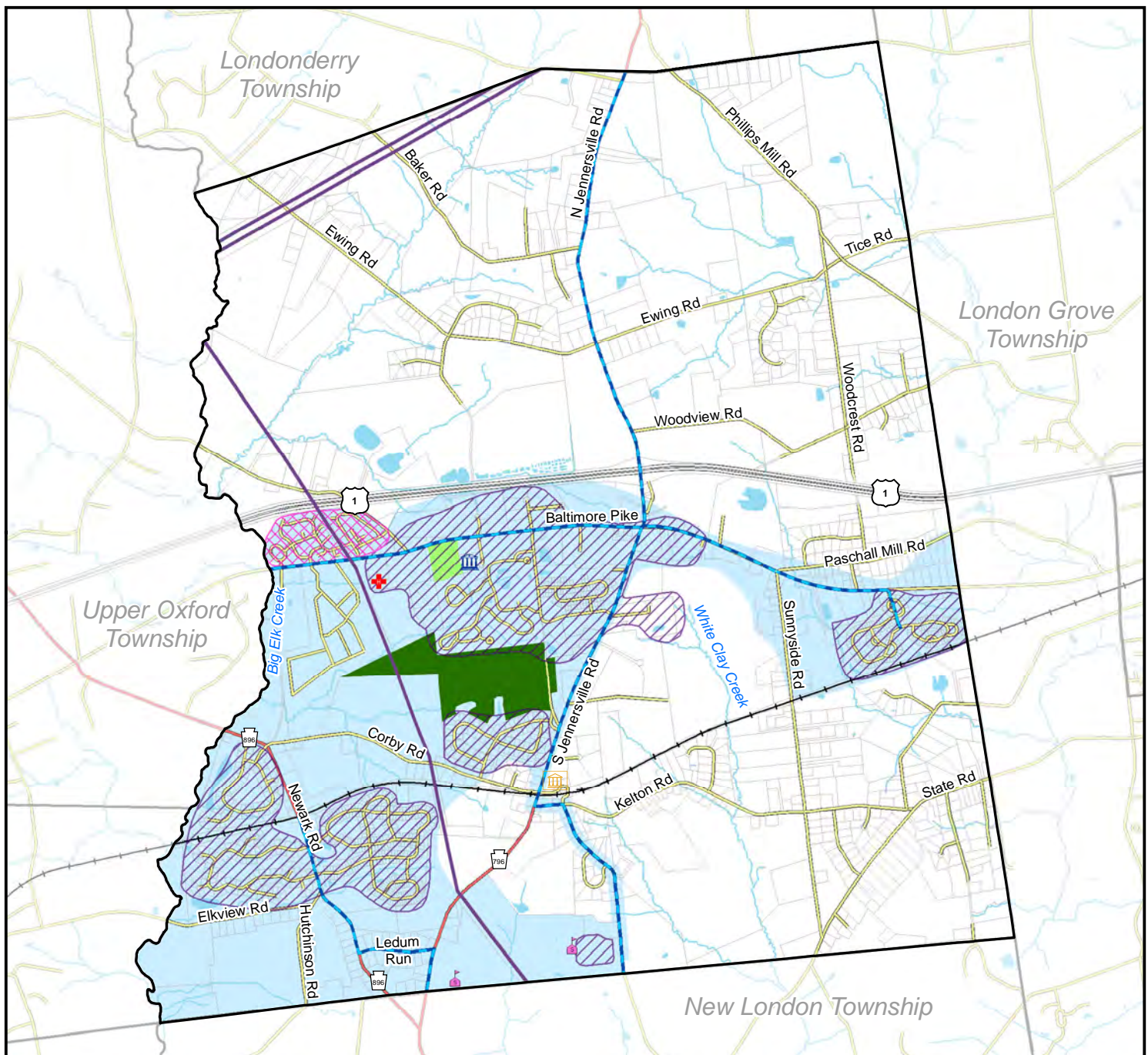
Local Road

State Road

US Highway

Lakes, Rivers and Streams

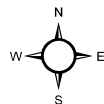
*See Figure 6-10 for details on Transportation Needs



Penn Township Comprehensive Plan

Map 7-1: Community Facilities and Services

0 0.25 0.5 1 Miles



This map was digitally compiled for internal maintenance and developmental use by the County of Chester, Pennsylvania to provide an index to parcels and for other reference purposes. Parcel lines do not represent actual field surveys of premises. County of Chester, Pennsylvania makes no claims as to the completeness, accuracy or content of any data contained hereon, and makes no representation of any kind, including, but not limited to, the warranties of merchantability or fitness for a particular use, nor are any warranties to be implied or inferred, with respect to the information or data furnished herein. No part of this document may be reproduced, stored in a retrieval system or transmitted in any form or by any means, electronic, mechanical, photocopying, recording, or otherwise, except as expressly permitted by the County of Chester.

Chester County Planning Commission, September 2012



Map Features

- Township Building
- Public Schools
- Hospitals
- Post Office
- Overhead Transmission Lines

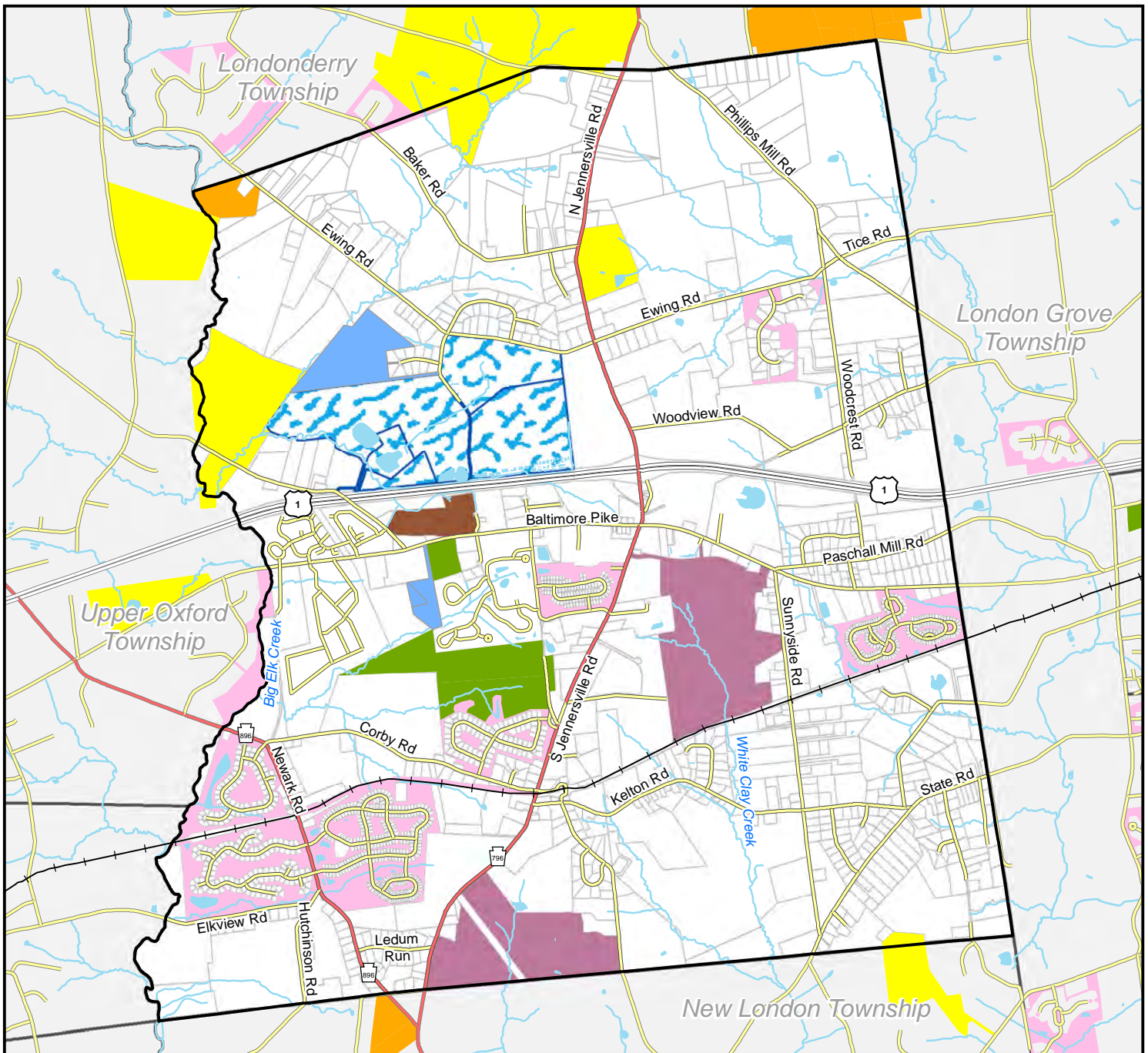
Sewer Service Areas

- Oxford Village MHP
- Penn Township

Water Service Areas

- Public Water Service Areas
- Water Lines

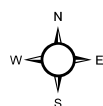
- Municipal Boundaries
- Parcels
- Railroad
- Local Road
- State Road
- US Highway
- Lakes, Rivers and Streams
- Township Park
- Future Township Park



Penn Township Comprehensive Plan

Map 8-1: Recreation and Open Space Inventory

0 0.25 0.5 1 Miles



This map was digitally compiled for internal maintenance and developmental use by the County of Chester, Pennsylvania to provide an index to parcels and for other reference purposes. Parcel lines do not represent actual field surveys of premises. County of Chester, Pennsylvania makes no claims as to the completeness, accuracy or content of any data contained herein, and makes no representation of any kind, including, but not limited to, the warranties of merchantability or fitness for a particular use, nor are any such warranties to be implied or inferred, with respect to the information or data furnished herein. No part of this document may be reproduced, stored in a retrieval system or transmitted in any form or by any means, electronic, mechanical, photocopying, recording, or otherwise, except as expressly permitted by the County of Chester.

Chester County Planning Commission, September 2012



Map Features

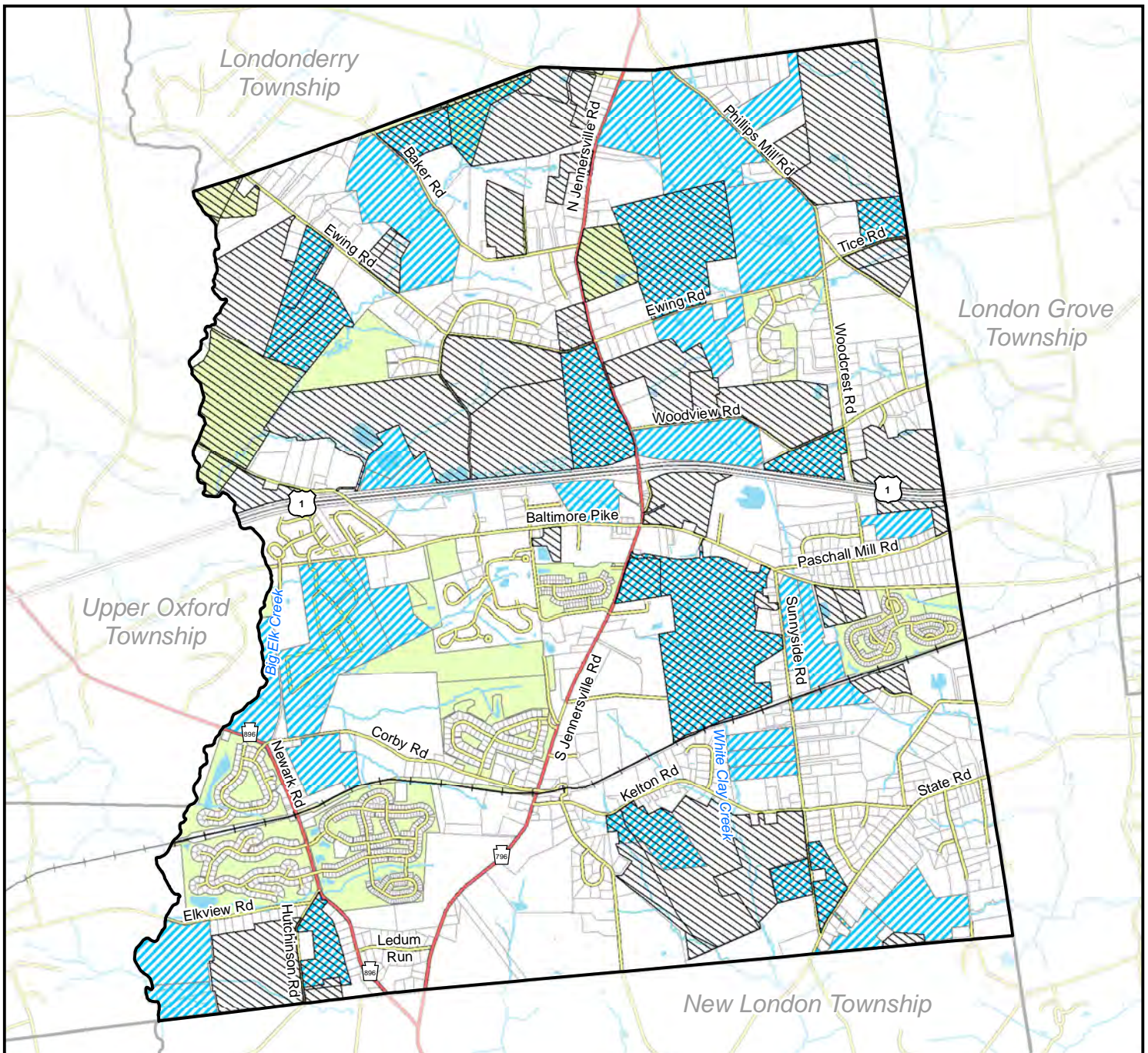
Permanently Protected Open Space:

- Farms with ALPB Easements
- Property with Land Trust Easements
- Homeowner Association Open Space
- Township Parkland

Institutional Properties:

- Public School Property
- YMCA Property

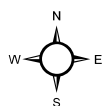
- Municipal Boundaries
- Parcels
- Railroad
- Local Road
- State Road
- US Highway
- Lakes, Rivers and Streams
- Drip Irrigation Fields
- Township Wastewater Treatment Sites



Penn Township Comprehensive Plan

Map 8-2: Undeveloped Lands and Agricultural Security Areas

0 0.25 0.5 1 Miles



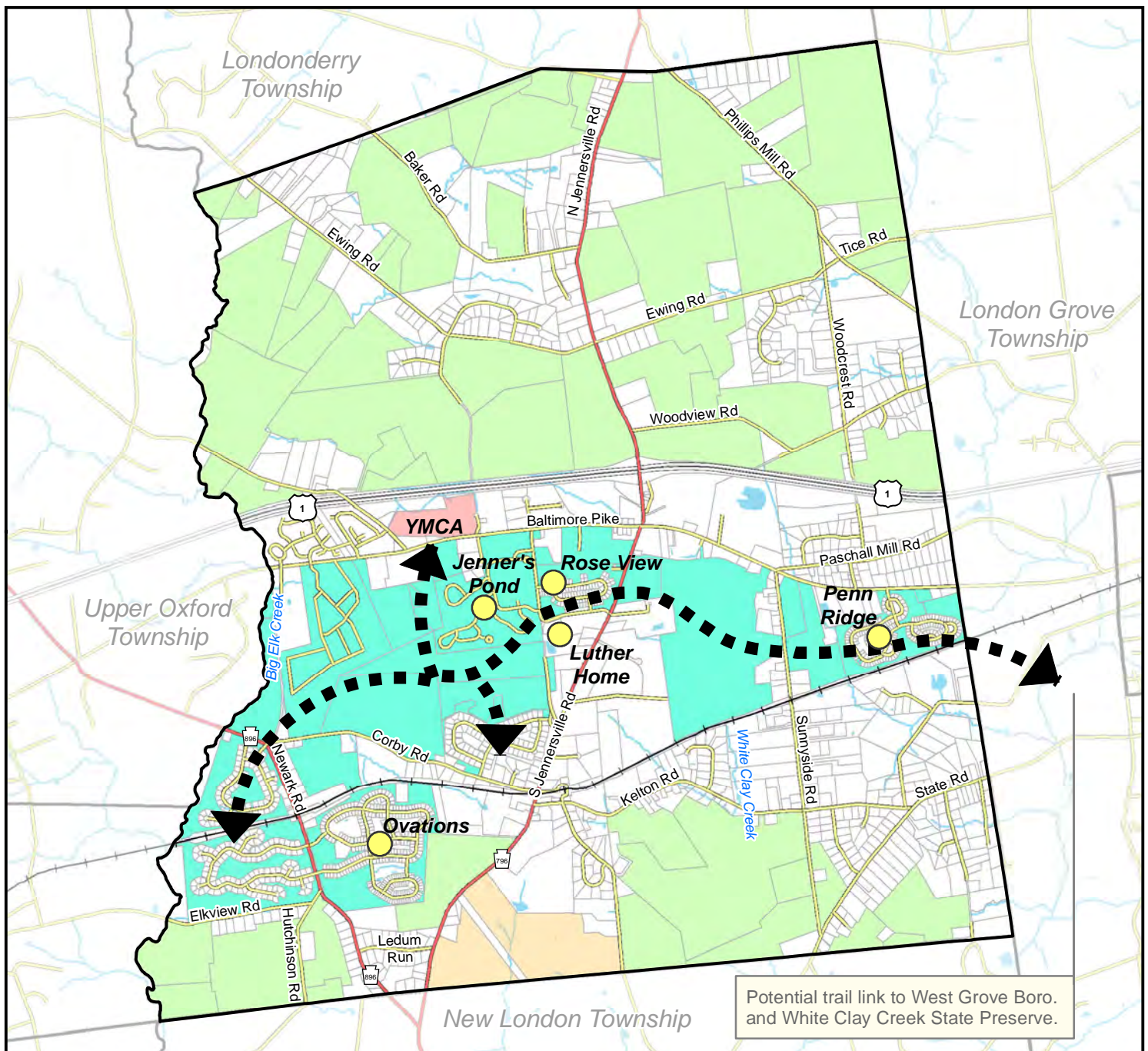
This map was digitally compiled for internal maintenance and developmental use by the County of Chester, Pennsylvania to provide an index to parcels and for other reference purposes. Parcel lines do not represent actual field surveys of premises. County of Chester, Pennsylvania makes no claims as to the completeness, accuracy or content of any data contained hereon, and makes no representation of any kind, including, but not limited to, the warranties of merchantability or fitness for a particular use, nor are any such warranties to be implied or inferred, with respect to the information or data furnished herein. No part of this document may be reproduced, stored in a retrieval system or transmitted in any form or by any means, electronic, mechanical, photocopying, recording, or otherwise, except as expressly permitted by the County of Chester.

Chester County Planning Commission, September 2012



Map Features

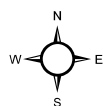
- | | |
|---------------------------------------|---------------------------|
| Agricultural Security Areas | Municipal Boundaries |
| Undeveloped Lands of 10 Acres or More | Parcels |
| Protected Open Space | Railroad |
| | Local Road |
| | State Road |
| | US Highway |
| | Lakes, Rivers and Streams |



Penn Township Comprehensive Plan

Map 8-3: Potential Recreation Greenway and Open Space Clusters

0 0.25 0.5 1 Miles



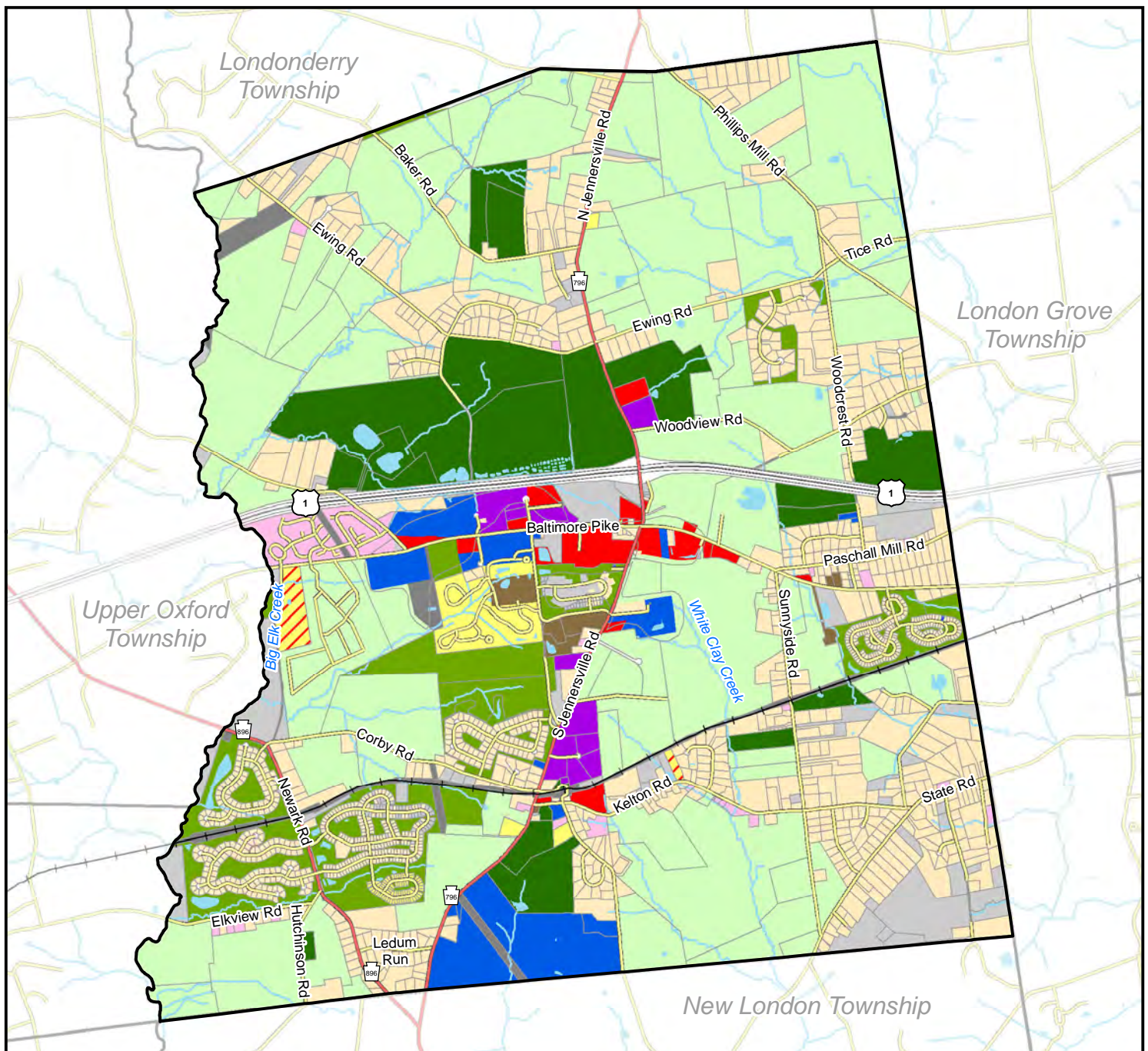
This map was digitally compiled for internal maintenance and developmental use by the County of Chester, Pennsylvania to provide an index to parcels and for other reference purposes. Parcel lines do not represent actual field surveys of premises. County of Chester, Pennsylvania makes no claims as to the completeness, accuracy or content of any data contained hereon, and makes no representation of any kind, including, but not limited to, the warranties of merchantability or fitness for a particular use, nor are any such warranties to be implied or inferred, with respect to the information or data furnished herein. No part of this document may be reproduced, stored in a retrieval system or transmitted in any form or by any means, electronic, mechanical, photocopying, recording, or otherwise, except as expressly permitted by the County of Chester.

Chester County Planning Commission, September 2012



Map Features

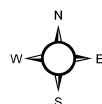
- | | |
|---------------------------------|---------------------------|
| Potential Recreational Greenway | Municipal Boundaries |
| Potential Open Space Clusters | Parcels |
| Public School Property | Railroad |
| YMCA Property | Local Road |
| Concept Trail Network | State Road |
| Age Restricted Community | US Highway |
| | Lakes, Rivers and Streams |



Penn Township Comprehensive Plan

Map 10-1: Existing Land Use

0 0.25 0.5 1 Miles



This map was digitally compiled for internal maintenance and developmental use by the County of Chester, Pennsylvania to provide an index to parcels and for other reference purposes. Parcel lines do not represent actual field surveys of premises. County of Chester, Pennsylvania makes no claims as to the completeness, accuracy or content of any data contained herein, and makes no representation of any kind, including, but not limited to, the warranties of merchantability or fitness for a particular use, nor are any such warranties to be implied or inferred, with respect to the information or data furnished herein. No part of this document may be reproduced, stored in a retrieval system or transmitted in any form or by any means, electronic, mechanical, photocopying, recording, or otherwise, except as expressly permitted by the County of Chester.

Chester County Planning Commission, September 2012

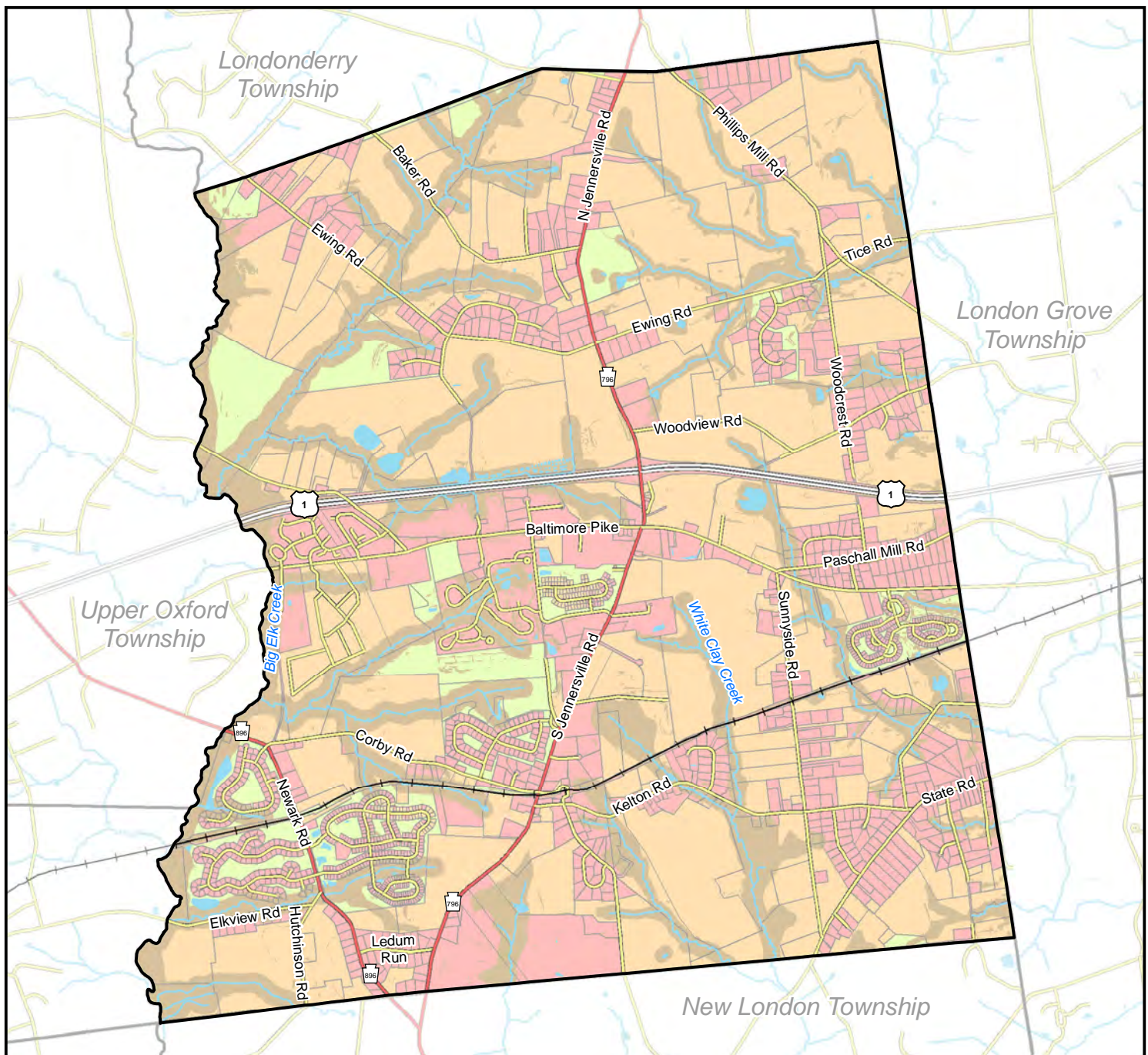


Map Features

Land Use:

- | | |
|---------------------------|-------------------------------|
| Single Family Residential | Industrial Agriculture |
| Two Family Residential | Open Space/Parks & Recreation |
| Multi-family Residential | Utilities |
| Mobile Home | Vacant |
| Mixed Use | Transportation |
| Commercial Services | |
| Institutional | |
| Industrial | |
| Agriculture | |

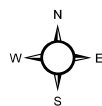
- | |
|---------------------------|
| Municipal Boundaries |
| Parcels |
| Railroad |
| Local Road |
| State Road |
| US Highway |
| Lakes, Rivers and Streams |



Penn Township Comprehensive Plan

Map 10-2: Protected and Developable Lands

0 0.25 0.5 1 Miles



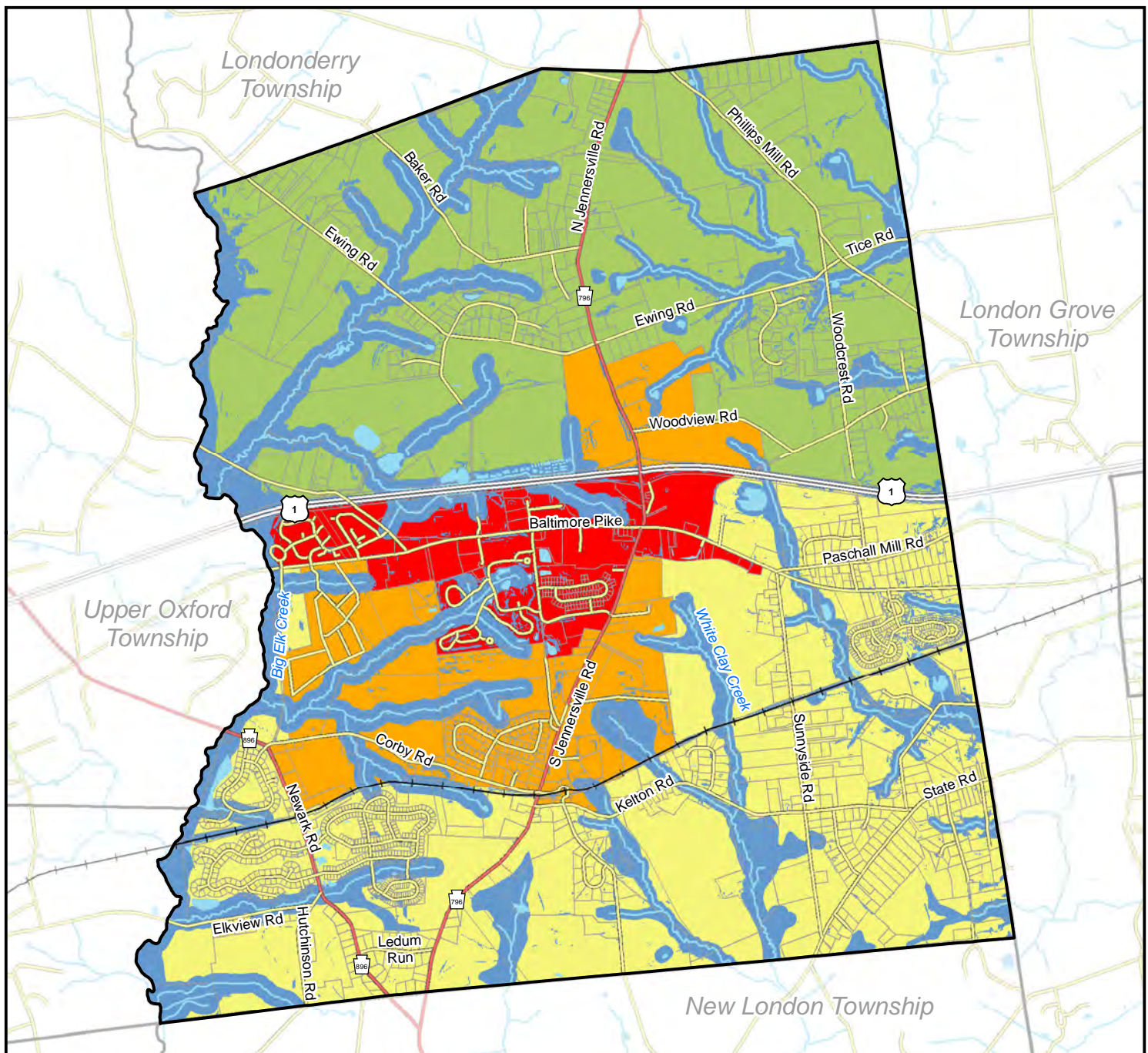
This map was digitally compiled for internal maintenance and developmental use by the County of Chester, Pennsylvania to provide an index to parcels and for other reference purposes. Parcel lines do not represent actual field surveys of premises. County of Chester, Pennsylvania makes no claims as to the completeness, accuracy or content of any data contained hereon, and makes no representation of any kind, including, but not limited to, the warranties of merchantability or fitness for a particular use, nor are any such warranties to be implied or inferred, with respect to the information or data furnished herein. No part of this document may be reproduced, stored in a retrieval system or transmitted in any form or by any means, electronic, mechanical, photocopying, recording, or otherwise, except as expressly permitted by the County of Chester.

Chester County Planning Commission, September 2012



Map Features

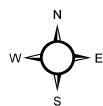
- | | | | |
|--|---------------------------------|--|---------------------------|
| | Developed Lands (1,642 acres) | | Municipal Boundaries |
| | Constrained Lands (1,598 acres) | | Parcels |
| | Protected Lands (341 acres) | | Railroad |
| | Developable Lands (2,598 acres) | | Local Road |
| | | | State Road |
| | | | US Highway |
| | | | Lakes, Rivers and Streams |



Penn Township Comprehensive Plan

Map 10-3: Future Land Use Plan

0 0.25 0.5 1 Miles



This map was digitally compiled for internal maintenance and developmental use by the County of Chester, Pennsylvania to provide an index to parcels and for other reference purposes. Parcel lines do not represent actual field surveys of premises. County of Chester, Pennsylvania makes no claims as to the completeness, accuracy or content of any data contained hereon, and makes no representation of any kind, including, but not limited to, the warranties of merchantability or fitness for a particular use, nor are any such warranties to be implied or inferred, with respect to the information or data furnished herein. No part of this document may be reproduced, stored in a retrieval system or transmitted in any form or by any means, electronic, mechanical, photocopying, recording, or otherwise, except as expressly permitted by the County of Chester.

Chester County Planning Commission, September 2012



Map Features

Resource Protection Areas:

- Rural
- Sensitive Resources

Growth Areas:

- Suburban
- Suburban Center
- Town Center



Municipal Boundaries



Parcels



Railroad



Local Road



State Road



US Highway



Lakes, Rivers and Streams